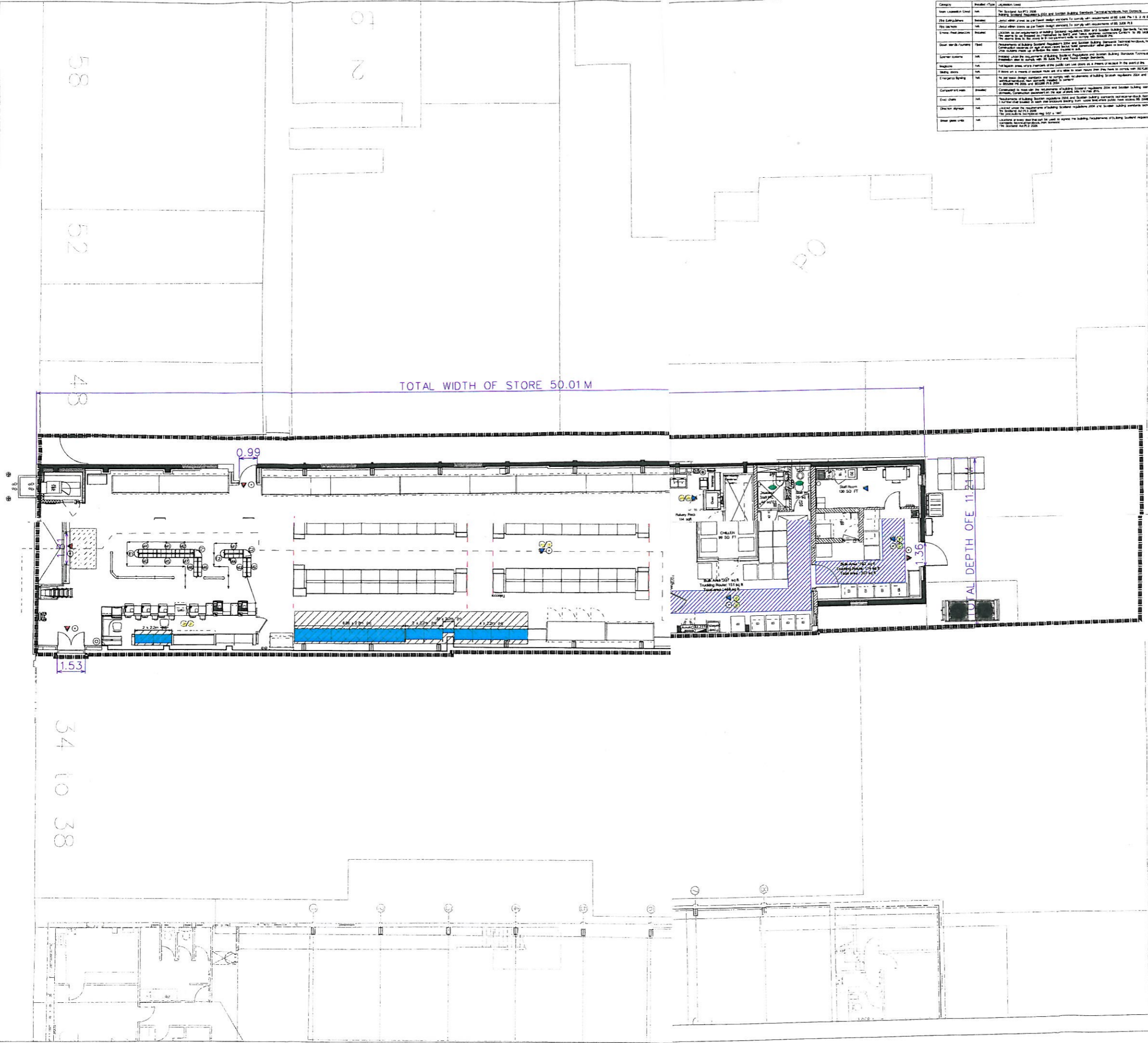


Category	Revised / Item	Location / Notes
Non-Compliance	104	See Schedule A of 2008
Fire Escape	105	See Schedule A of 2008
Fire Alarm	106	See Schedule A of 2008
Fire Door	107	See Schedule A of 2008
Fire Staircase	108	See Schedule A of 2008
Fire Escape	109	See Schedule A of 2008
Fire Alarm	110	See Schedule A of 2008
Fire Door	111	See Schedule A of 2008
Fire Staircase	112	See Schedule A of 2008
Fire Escape	113	See Schedule A of 2008
Fire Alarm	114	See Schedule A of 2008
Fire Door	115	See Schedule A of 2008
Fire Staircase	116	See Schedule A of 2008
Fire Escape	117	See Schedule A of 2008
Fire Alarm	118	See Schedule A of 2008
Fire Door	119	See Schedule A of 2008
Fire Staircase	120	See Schedule A of 2008
Fire Escape	121	See Schedule A of 2008
Fire Alarm	122	See Schedule A of 2008
Fire Door	123	See Schedule A of 2008
Fire Staircase	124	See Schedule A of 2008
Fire Escape	125	See Schedule A of 2008
Fire Alarm	126	See Schedule A of 2008
Fire Door	127	See Schedule A of 2008
Fire Staircase	128	See Schedule A of 2008
Fire Escape	129	See Schedule A of 2008
Fire Alarm	130	See Schedule A of 2008
Fire Door	131	See Schedule A of 2008
Fire Staircase	132	See Schedule A of 2008
Fire Escape	133	See Schedule A of 2008
Fire Alarm	134	See Schedule A of 2008
Fire Door	135	See Schedule A of 2008
Fire Staircase	136	See Schedule A of 2008
Fire Escape	137	See Schedule A of 2008
Fire Alarm	138	See Schedule A of 2008
Fire Door	139	See Schedule A of 2008
Fire Staircase	140	See Schedule A of 2008
Fire Escape	141	See Schedule A of 2008
Fire Alarm	142	See Schedule A of 2008
Fire Door	143	See Schedule A of 2008
Fire Staircase	144	See Schedule A of 2008
Fire Escape	145	See Schedule A of 2008
Fire Alarm	146	See Schedule A of 2008
Fire Door	147	See Schedule A of 2008
Fire Staircase	148	See Schedule A of 2008
Fire Escape	149	See Schedule A of 2008
Fire Alarm	150	See Schedule A of 2008

REV	DATE	AMENDMENTS	ISSUED BY
1#	06.08.10	TOTAL UNOCCUPIED FRONTAGE IN M SQ-39 SQ M	



Disclaimer: Any information contained in this drawing which is not required by regulation 5 of SSI2007452 is included for illustrative purposes only and does not form part of the layout plan for the purposes of the said regulation or the Licensing (Scotland) Act 2005. This will prevent us requiring a new application when other areas of the store change.

CHILDREN ARE ALLOWED IN ALL PUBLIC AREAS OF THE PREMISES

- LEGEND
- SOUNDER
 - VISUAL INDICATOR (BEACON)
 - BREAK GLASS CALL POINT

AREA TO BE USED FOR THE DISPLAY OF ALCOHOL PRODUCTS PACKED WITH, AND WHICH MAY ONLY BE PURCHASED ALONG WITH, ALCOHOL AND NON-ALCOHOLIC DRINKS

ADDRESS 42 Portland Street
TROON
AYRSHIRE
NOT ASSIGNED
KA10 6EA

PROJECT
6381
TROON

DESCRIPTION
PROPOSED RETAIL LAYOUT
ALCOHOL LICENSE APPLICATION

DRAWING NO 6381GAG1#.DGN

PHASE 3 ISSUE 1#

SYSTEM ID. No. 6381bg1#.dgn, 6381rg1#.dgn, 6381sp1#.dgn

SCALE DATE
1:100@A1 06.08.2010

DRAWN
JAYASHREE



TESCO STORES LIMITED
STORE PLANNING DEPARTMENT
PROPERTY SERVICES
P.O. BOX 400, CIRCUS BUILDING SHIRE PARK
WELWYN GARDEN CITY, HERTS AL7 1AB
TELEPHONE : 01707 395150
THE COPYRIGHT AND ALL OTHER RIGHTS IN AND RELATING TO THIS PUBLICATION BELONG TO AND ARE THE SOLE PROPERTY OF TESCO STORES LIMITED. ALL RIGHTS ARE RESERVED HEREIN. THE WHOLE OR ANY PART OF THIS PUBLICATION MAY BE REPRODUCED OR TRANSMITTED IN ANY FORM OR BY ANY MEANS, ELECTRONIC OR MECHANICAL, INCLUDING PHOTOCOPYING, RECORDING OR FROM ANY INFORMATION STORAGE AND RETRIEVAL SYSTEM, WITHOUT THE WRITTEN PERMISSION OF TESCO STORES LIMITED.

58

52

48

34
10
38

TOTAL WIDTH OF STORE 50.01 M

TOTAL DEPTH OF 11.21 M

PO

1.53

0.99

1.36